

# The Sister City Lighthouse Project

Creating messages of hope across the oceans

In these difficult times we are united. As Virginia Woolf said:

***“Lighthouses are endlessly suggestive signifiers of both human isolation and our ultimate connectedness to each other.”***

– Virginia Woolf





# The Sister City Lighthouse Project

*Create a lighthouse lantern using a milk carton and Paper Mache.  
Decorate your lighthouse with messages of hope to share with  
others. Send in pictures of your creations to share.*



*Man must behave like  
a lighthouse, he must Shine  
day and night  
For the goodness  
Of every  
man.*

*Mehmet Murat Ildan*

***Mersey Bluff Lighthouse Devonport Tasmania***

**Image <https://visitcradlecoast.com.au/products/destination-information/devonport/>**





### You Will Need...

- 1 milk carton
- 1 Tbspn Paper Mache glue (see following recipe)
- Small sharp nail scissors or Stanley knife
- Newspaper
- White Office paper
- Coloured cellophane (optional)
- Paints, texters, drawing or collage materials
- LED battery operated tea light (optional)



*COMPLETE THE FOLLOWING ART PROJECT AND SHARE YOUR CREATIONS...*



# Step 1- Mix up glue Paper Mache Glue Recipe

## What you need

- flour
- water
- mixing bowl
- spoon

## Activity

Mix one part flour with one part of water (eg, 1 cup flour and 1 cup water, or 1/2 cup flour and 1/2 cup water) until you get a thick glue-like consistency. Add a bit more water if it's too thick.

Mix well with a spoon to get rid of all the lumps. If you find you are getting lumps in your glue, you can use a small kitchen electric mixer to whiz them out.

Add a few tablespoons of salt to the final mixture to help prevent mould.

## NOTES:

- You need to use strips of newspaper only, or even paper tissues or towels.
- Let the newspaper strips soak in the Paper Mache glue a little before using.
- Cover your artwork with only 2-3 layers, then let dry completely. This is an important step.
- Once a layer is dry you can add 2-3 more layers, remembering to let each layer dry before adding the next one.
- The final layer can be plain paper - so it's easier to paint - but use the thinnest paper possible and make sure it's soaked well in the Paper Mache glue.

## STEP 2:

With a permanent marker or pen, draw lines on your milk carton where you would like your windows and doors to be.

**Tip:** Don't make your window openings too small or they will be harder to Paper Mache later.





### STEP 3:

Cut out the windows and door carefully using a Stanley knife or scissors, I found small sharp nail scissors worked best. (Leave one long side of the door uncut so your door can open and close)



Get an adult to help you cutting out and please be careful with sharp scissors and knives!



## STEP 4:

Apply strips of torn newspaper all over your milk carton using the pre prepared Paper Mache glue all over to stick and seal it. Do a few layers until it is thick and strong. Leave it to dry over night.

**Tip:** Use your fingers to dip small torn pieces of newspaper into glue, scrape excess glue off with fingers, and apply to milk carton carefully squashing out any air



*Please note: Covering your milk carton lighthouse in newspaper and glue is a messy job! Best done outside or with newspaper and drop sheet down. Easily cleaned up with water before dry.*

Make sure you apply the Paper Mache through your window cut outs, don't cover up your windows!



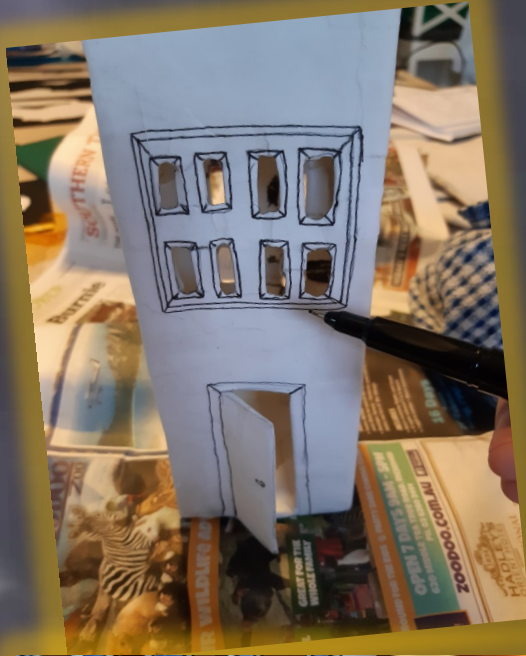
## STEP 5:

When you are happy with your Paper Mache thickness, do a couple of layers using white paper to finish. Again allow to dry over night.

*Note: Use firm pressure with your fingers to apply the paper as it can be a bit stiff at first and might need a bit of working to get it to stick around corners. I used my small scissors to help me stick it down through the windows. It can be a bit fiddly so have patience!*







## STEP 6:

Once your Paper Mache is dry your house can be coloured and drawn or painted on to give it its final character. You could paint it, draw on it or even stick some materials you have found onto it. The choice is yours... be as creative as you like!







## STEP 7:

Incorporate a message of hope to share with others somewhere in your decoration. It might be a few positive words that you like, or something you love or look forward to.



### STEP 8: (optional)

Lastly, fill in the window gaps with coloured cellophane. Measure how big you need to cut it to make sure it is big enough to completely cover your windows. Stick it down using sticky tape or glue from inside to create colourful glass for your windows.

*(you may have to cut out the bottom of your milk carton to fit your hand inside to attach the cellophane)*



PLACE A BATTERY OPERATED LED TEA LIGHT INSIDE TO LIGHT YOUR LIGHTHOUSE  
FROM WITHIN.



FEELING INSPIRED?....

WHY NOT CREATE MORE?

SEE HOW MANY DIFFERENT SIZE AND  
SHAPE CARTONS AND BOXES YOU CAN FIND TO CREATE  
DIFFERENT LIGHTHOUSES.

TAKE A PHOTO OF YOUR LIGHTHOUSE (S)

E-MAIL PICTURES OF YOUR MASTERPIECES TO:

**[Marketingandpromotions@devonport.tas.gov.au](mailto:Marketingandpromotions@devonport.tas.gov.au)**

